



W | K
OWING HOW |
AND KNOWING HO
OWING WHY AND KNOWING
W | KNOWING WHY AND KNOW
AND K | OWING HOW | KNOWING WHY AND
NG WHY AND OWING HOW | KNOWING WHY
OWING WHY AND OWING HOW | KNOWING W
OWING WHY AND KNOWING HOW | KNOWI
W | KNOWING V AND KNOWING HOW | K
OW | KNOWING WHY AND KNOWING HC
OW | KNOWING WHY AND KNOW
OWING HOW | KNOWING WHY AND
OWING HOW | KNOWING WHY
OWING HOW | KNOWING
W | KNOWING WHY AND KNOWING HOW | KNOW
OW | **KNOWING WHY AND KNOWING HOW** | KNOW
OW | KNOWING WHY AND KNOWING HOW
OW | KNOWING WHY AND KNOWING I
OWING WHY AND KNOW
OW | KNOWING WHY AND
OWING WHY AND KNOWING
KNOWING WHY AND KNOW
OW | KNOWING WHY AND K
OWING HOW | KNOWING WHY AN
AND KNOWING HOW | KNOWING WHY
OWING WHY AND KNOWING HOW | KNOWING
OWING WHY AND KNOWING HOW | KN
OWING V AND KNOWING HOW
OW | KNOWING AND KNOWING
OWING HOW | OWING WHY AND KN
HY AND KNOWING | KNOWING WHY
OWING WHY AND KN OW | KNOWING
OWING WHY OWING HOW | K

Contents

C O N T E N T S

Management expertise and social responsibility page 4-5		Generating new knowledge page 14-15
The Berlin School of Economics and Law page 6-7		Delivering the programmes effectively page 16-17
Transferring professional know-how page 8-9		Delivering the programmes effectively page 18-19
Providing an international perspective page 10-11		Degree programmes of the BSEL page 20-21
Enhancing programme excellence page 12-13		Key facts & figures page 22-23
		Campuses & contacts page 24-25

M A N A G E M E N T E X P E R T I S E R T A S E D A N D S O C I A L R E S P O N S I B I L I T Y

Management expertise and social responsibility



Focusing on a core and global responsibility

Centered around business and public management, economics, security management, legal studies and engineering the Hochschule für Wirtschaft und Recht Berlin – Berlin School of Economics and Law (BSEL) is a unique player among Berlin's and Germany's universities. With over 9,000 students our School is a medium-sized university by German standards, but within our fields of competence we offer a great variety of opportunities through forty-five undergraduate and graduate degree programmes. Our highly qualified faculty aims to impart to our students sound academic knowledge and applicable skills in our fields of competence while taking a wider global and societal perspective. We are firmly rooted in Berlin, the vibrant

capital city of Germany in the heart of Europe, and we welcome students from all over the world to study along with our students.

With the world in a constant state of change, today's solutions are often no longer effective tomorrow. This makes it even more crucial for the new generation of managers, public officials and experts of NGOs to ask the right questions, develop key critical human resources and realise their creative potential. We support this process by teaching students to look at problems from a variety of perspectives and to apply interdisciplinary approaches to find individual solutions.

For all these reasons, we provide our students with the dual perspective of 'Knowing why and knowing how' in their fields of study, helping them to achieve successful professional careers while acting as socially responsible citizens of our globalized world.

Professor Bernd Reisert
President of the Berlin School of Economics and Law

In the science capital of Germany

The Berlin School of Economics and Law

T H E B E R L I N S C H O O L O F E C O N O M I C S A N D L A W

Building more than just a successful career

The Berlin School of Economics and Law (BSEL) is a leading German University of Applied Sciences focused in the areas of business and public administration as well as economics, security management, legal studies and engineering. With over 9,000 students and over 1,700 graduates every year, BSEL has grown into a major player among Berlin's fourteen public universities and among Germany's public universities in its fields. Today, students can choose among some 45 programmes at the undergraduate or graduate level preparing them for a career in national and international companies and in public or non-profit institutions.

Berlin – a key location for academia and science

As an international university location and Germany's capital city, Berlin has a rich and diverse cultural, social and political life with a unique atmosphere. Students, researchers and scientists from all over the world enjoy studying or working at one of Berlin's universities or at the over 70 extramural research institutes and play their part in shaping Berlin's reputation as a leading academic, artistic and scientific centre.

Berlin is also a prime example of transforming an industrial base into a vibrant entrepreneurial knowledge and service hub. Today, the city is generating the new ideas needed to create young and successful companies in a European metropolis at the cutting edge of tomorrow's trends.

The Universities of Applied Sciences

...were established in the early seventies to support German industries in maintaining international competitiveness. They have grown into a major pillar of the German university system.

Major strengths are:

- Equal emphasis on strong academic foundation as well as on practical application
- Applied research often in cooperation with companies or public institutions
- Strong international orientation
- Small class size with subjects relating to professional needs
- Internships typically a mandatory component



Sustainable expertise

Transferring professional know-how

T R A N S F E R R I N G P R O F E S S I O N A L K N O W - H O W

Broadly-based knowledge – in-depth expertise

The Berlin School of Economics and Law boasts a core faculty of some 170 highly qualified professors working in disciplines such as business administration, economics, law, sociology, psychology, computer science, quantitative methods, and engineering. Apart from a doctoral degree and academic credentials in their discipline they also have practical experience as, for example, managers, consultants, public administrators, lawyers, police officers or judges. Their knowledge of and connections to active business life, public service organisations, and non-profit organisations, to multinational firms or smaller local companies are especially valuable in linking academic research with current issues, learning from case studies or arranging placements. The University staff also includes 400 visiting professors, part-time and full-time lecturers. Their special expertise further underlines the strong professional orientation of degree programmes.

In many of its programmes the University pursues a broader interdisciplinary and holistic approach to

education. The University's forward-looking stance is also evident in the inclusion of Gender Studies and Sustainability as important elements in many of its programmes. The almost 500 partner firms of BSEL and the manifold relationships with public bodies represent a valuable resource.

BSEL professors have professional experience with (examples):

Bayer – Bain & Company – Berlin Government – Bertelsmann – Bombardier – Commerzbank – Credit Suisse – Daimler – Deutsche Post World Net – Deutsche Telekom – Ernst & Young – Federal Courts – Federal Government – Greenpeace – IBM – KPMG – McGuireWoods – Novartis – PricewaterhouseCoopers – Siemens – The Boston Consulting Group – ThyssenKrupp – Volkswagen – Zurich Insurance



Building a career in a globalised world

Providing an international perspective

P R O P V R O D U C T I D N I G G A N A N I N T N E T R E N A A T T I O N A A L L P E R R S S P E C E T C I T V E V E

As market globalisation expands, evermore companies and non-profit organisations operate worldwide – teaching and research need to respond by strengthening an international approach. As a global orientation is a key element of BSEL's mission we aim to provide our students with intercultural learning opportunities and with insights into international business and into the global economy.

Studying without borders

BSEL encourages students to experience other cultures and other parts of the world. One of the University's core strengths are its eleven dual degree programmes with universities in China, France, Finland, the Netherlands, Spain, Turkey and the UK. The University's 130 active partnerships with universities around the world facilitate regular student and faculty exchanges. Every year, over 300 BSEL students benefit from a semester or a year of study at a university abroad. In return, more than 300 exchange students from our international partner universities discover what it is like to study at our School and in Berlin. Apart from student exchanges, the University also supervises more than 100 internships abroad and welcomes about 100 international summer school students every year.

Overcoming language barriers

While German is still the major language of instruction BSEL has made great efforts to establish English as a significant second teaching language. Many of our Masters' and MBA programmes in business and economics as well as one undergraduate business programme are taught entirely in English. Most other programmes have an 'English Stream' of modules. These programmes attract students from all over the world. In addition, the University offers Spanish, French and Russian courses both for general and business language skills as well as German courses for foreign students.

A national network – active internationally

To strengthen its position internationally, the BSEL has joined forces with six other leading German universities in an "Alliance for Excellence". UAS7 (Seven Universities of Applied Sciences) is dedicated to enhancing quality and fostering an international approach by bundling resources in a strategic partnership to promote teaching and research. A joint office in New York supports its presence on the North American educational market and promotes cooperation with US and Canadian universities.



UAS7 – Alliance for Excellence

- Berlin School of Economics and Law
- Bremen University of Applied Sciences
- Hamburg University of Applied Sciences
- Köln University of Applied Sciences
- University of Applied Sciences München
- Münster University of Applied Sciences
- Osnabrück University of Applied Sciences

UAS7 – Features

- 500 Degree programmes in seven attractive German cities
- 80,000 students
- 2,200 Full-time faculty members, > 90% PhD or doctorate
- Covering business, engineering, economics, public management, law, social sciences, architecture and design

The foundation of success

Enhancing programme excellence

BSEL regularly applies internal and external assessment procedures to evaluate the quality of its teaching and research – the only way to ensure that the programmes meet the demands facing tomorrow's leaders. The results flow back into developing the most effective teaching and research platform for students and academic staff and to enhance the creative, productive atmosphere for everyone learning or working here.

Accredited success

BSEL welcomes the idea of a European Higher Education Area as stipulated by the Bologna Process. The University was among the first in Germany to implement a transition over to the bachelor/master cycle with comparable, transparent and compatible degree programmes. All degree programmes at BSEL are approved by the Department of Education of the Berlin Government. In addition, all programmes except for the most recent ones have been evaluated and accredited by one of the external accreditation agencies which are authorized by the German Accreditation Council.

Feedback for the future

All courses and programmes are subject to regular internal assessment procedures which guide pro-

gramme development or structural changes. Graduate surveys provide another key source of information providing a vital benchmark of our success in integrating the needs of employers into our degree programmes.

Rankings

BSEL is frequently ranked among the leaders in Germany-wide surveys of programmes in its major fields. For example, in a survey of graduate employability initiated by leading multinationals, the University's business bachelor programmes were among the small group of top performers.

Award-winning commitment

Our School has won numerous awards for its commitment to gender and sustainability issues. Repeatedly, the University received the Total E-Quality Award for its equal opportunity practice. For more than a decade, BSEL has been enhancing its environmental management system and was the first university in Berlin to receive the award of TÜVRheinland.



Integrating overarching skills

Generating new knowledge

GENERATING NEW KNOWLEDGE



BSEL has an intensive and wide-ranging research programme. Research is conducted in internally or third-party funded projects, or in the form of individual research. Since the University specifically encourages linking research and real-life practice, much of the research has a strongly applied character. Moreover, the University's interdisciplinary approach promotes cross-departmental cooperation in developing research goals and projects.

Our School has an established research profile in the following areas (selection):

- Company valuation, risk management and controlling
- Environmental and sustainability management
- E-Government and process optimization
- Family business and corporate succession
- Gender issues in business, economics and politics
- Health care management
- International financial markets and monetary policy
- Industrial security and security management
- Modern service infrastructures and benchmarking
- Law (police law, criminal law and related fields)
- Regional and global governance, corporate social responsibility

Research funding by the Berlin Government has been bundled in the Institute for Applied Research Berlin e. V. (IfaF). Within this frame BSEL coordinates the Berlin competence centre 'Business, Economics and Public Administration'. Through cooperative research in the UAS7 Alliance for Excellence BSEL aims to achieve critical mass for major funding applications. BSEL participates in international research cooperations and EU projects.

Research Institutes at the BSEL

- Institute for Entrepreneurship, SMEs and Family Businesses (EMF Institute)
- Institute for International Political Economy Berlin (IPE Berlin)
- Institute for Logistics (IfL)
- Institute for Resource Conservation, Innovation and Sustainability e. V. (IRIS)
- Steinbeis Research Centre (SFZ)
- The Harriet Taylor Mill Institute for Economic and Gender Studies (HTMI)
- Institute for Knowledge Transfer in Public Administration and Legal Studies (IWVR e. V.)
- Institute for Gender and Law

Delivering the programmes effectively

D E L I V E R I N G T H E P R O G R A M M E S E F F E C T I V E L Y

At the central level the academic governance of BSEL is headed by the President, three Vice Presidents, the Chancellor and the Academic Senate. BSEL delivers its degree programmes through a decentralised structure of departments and central institutes which have their own Academic Councils and are headed by a Dean (departments) or a Director (central institutes).

Department of Business and Economics (1)

More than 3,800 students pursue their degrees in one of the ten undergraduate or eight Master level programmes. The majority are enrolled in business management programmes, a significant number also in economics and in hybrid programmes such business & law, business & informatics and business & engineering. The department's international outlook is reflected in various dual degree programmes, lively international exchange activity and a high share of teaching in the English language.

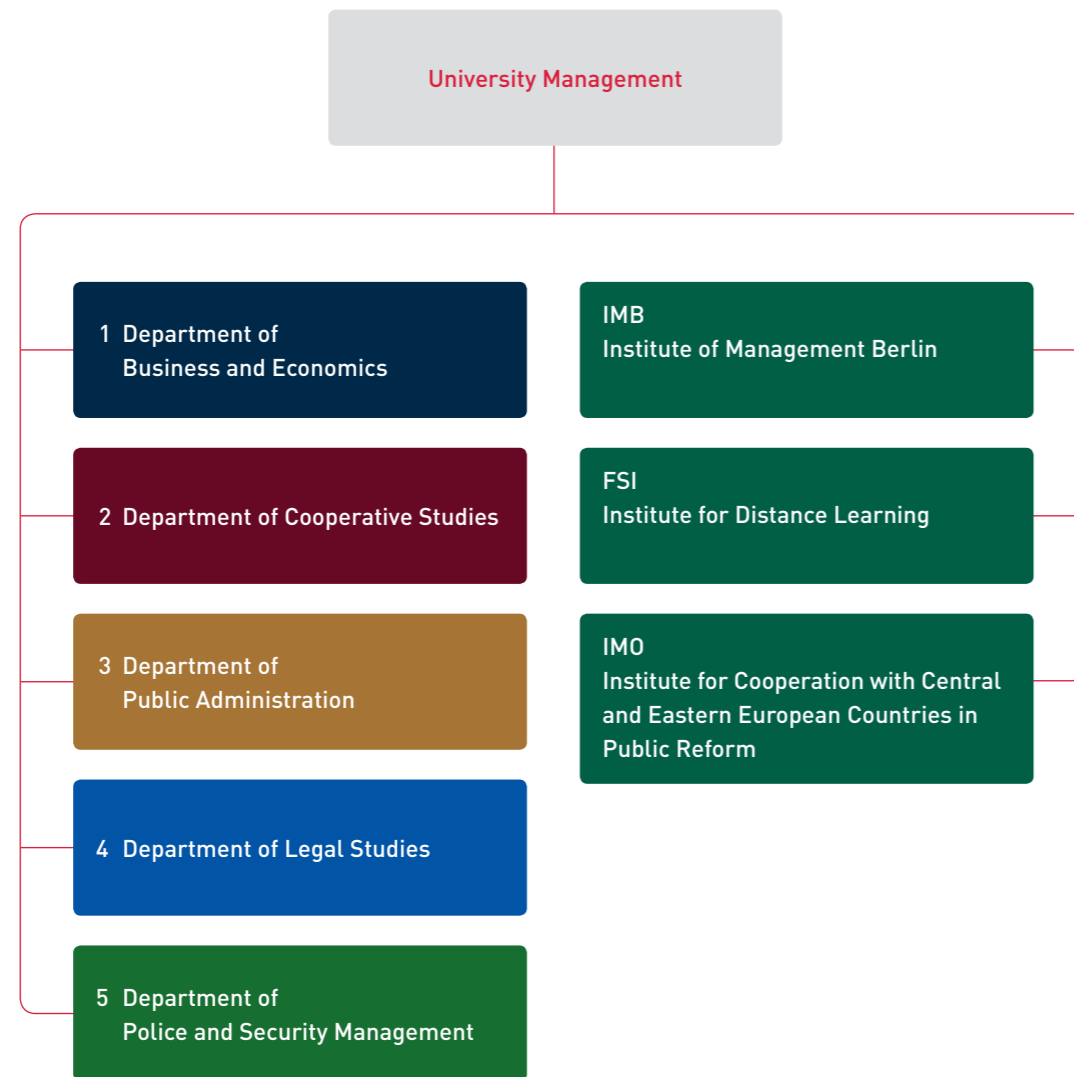
Department of Cooperative Studies (2)

The 2,000 students in the department's seven business and engineering programmes study in a sandwich course structure in cooperation with around 480 partner companies. In addition to a demanding undergraduate academic programme, the students return for repeated spells of well designed traineeships to their companies including Daimler, IBM, Bombardier, and Deutsche Bank. While programme standards are set by the academic bodies of BSEL the students receive a generous living allowance from their company.

Department of Public Administration (3)

The department runs four undergraduate and two Master's programmes. Over 1,100 students in public or non-profit sector management, law, or public sector informatics enjoy the department's strong professional and academic competences in these fields.





Department of Legal Services (4)

Around 400 students attend an undergraduate commercial law programme, dedicated degree courses for service tasks in the legal system, or higher degree courses for the German Foreign Service.

Department of Police and Security Management (5)

The department offers a range of programmes in the fields of police and private sector security. Over 1,000 students are enrolled in a mandatory undergraduate programme for higher police officers, a graduate police management programme and a programme in security management for the private sector.

IMB Institute of Management Berlin

Most of BSEL's for-fee-programmes at the graduate level are grouped under the IMB. BSEL pioneered the introduction of MBA degrees in Germany and is one of Germany's leading providers in this field. Most of the institute's MBA and MA programmes are run in English, have an international outlook and are attended by students from all over the world.

Institute for Distance Learning

BSEL's dedicated institute for distance learning runs three Master programmes in the fields of Public Administration and Security Management.

Institute for Cooperation with Central and Eastern European Countries in Public Reform

The institute is an interdisciplinary centre for development activities, education and knowledge transfer in the fields of public administration and police reform.

Variety and focus

Degree programmes of the BSEL

D E G R E E P R O G R A M M E S O F T H E H B S E L S E L

Bachelor Programme						Master Programme					
	Degree Awarded	Teaching Language	Dual Award Partners	Funding/Type	Department/Institute		Degree Awarded	Teaching Language	Dual Award Partners	Funding/Type	Department/Institute
Business Administration	B.A.	G/E	6 universities from the UK, Turkey, Spain and the Netherlands	Public FT/PT	1	Chinese – European Economics and Business Studies	M.A.	E	South Western University of Finance and Economics, PR China	Fees, FT	IMB
Business Administration: Banking, Services Management, Facility Management, Wholesale and Retail, Real Estate Management, Industry, International Business Administration, Transportation and Logistics, Taxation and Auditing, Tourism, Insurance	B.A.	G/E		Public Company-linked, FT	2	Guardian and Custodian (from SS 2011)	LL.M.	G		Fees, Public, PT, distance	4
Economics	B.A.	G/E		Public, FT	1	International Economics	M.A.	E		Public, FT	1
International Business Management	B.A.	E		Public, FT	1	International Marketing Management	M.A.	E		Public, FT	1
Entrepreneurship and Corporate Succession	B.A.	G/E		Public, PT	1	International Management – DFS from 2011/12)	M.A.	G/F/E	Ecole Supérieure du Commerce Extérieur (ESCE) Paris	Public, FT	1
International Business -IBU-	B.A.	G/E	Anglia Ruskin University, Cambridge (GB)	Public, FT	1	European Administrative Management	M.A.	G/E		Fees, Public, PT, distance	FSI
International Management -DFS-	B.A.	G/F/E	Ecole Supérieure du Commerce Extérieur (ESCE) Paris	Public, FT	1	Labour Policies and Globalisation	M.A.	E		Public, FT	IMB
Public Administration	B.A.	G		Public, FT	3	Sustainability and Quality Management	M.A.	G		Fees, PT	IMB
Public Management	B.A.	G		Public, FT	3	Nonprofit-Management and Public Governance	M.A.	G/E		Public, FT	3
Security Management	B.A.	G/E		Public, FT	5	Master Security Management (MSM) (from WS 2011/12)	M.A.	G/E		Fees, PT, distance	FSI
Informatics in Public Administration	B.A.	G/E		Public, FT	3	Law and Public Administration	LL.M.	G/E		Public, FT	3
Business Engineering in Environmental Science	B.Eng.	G		Public, FT	1	Master of Public Administration -MPA-	MPA	G		Fees, Public, PT, distance	FSI
Applied Electrical Engineering	B.Eng.	G		Public Company-linked, FT	2	Business Law in an International Context	LL.M	G/E		Public,	1
Civil Engineering	B.Eng.	G		Public Company-linked, FT	2	Accounting and Controlling	M.A.	E		PublicT	1
Mechanical Engineering	B.Eng.	G		Public Company-linked, FT	2	Political Economy of European Integration	M.A.	E		Public, FT	1
Law (Ius LL.B)	LL.B.	G/E		Public, FT	3	International Business & Consulting: Strategic Management	M.A.	E		Public, FT	1
Commercial Law	LL.B.	G		Public, FT	4	International Business & Consulting: International Human Resource Managemet	M.A.	E		Public, FT	1
Business Law	LL.B.	G		Public, FT	1	International Finance	M.Sc.	E		Public, FT	1
Business Information Systems	B.Sc.	G/E		Public, FT	1	Process- and Projectmanagement	M.A.	G		Public Company-linked, PT	2
Computer Science	B.Sc.	G		Public Company-linked, FT	2	MBA Programme	Degree Awarded	Teaching Language	Dual Award Partners	Funding/Type	Department/Institute
Information Systems	B.Sc.	G		Public Company-linked, FT	2	European Management	MBA	E	London Southbank University, UK	Fees, FT	IMB
Kooperativer Studiengang Betriebswirtschaft	B.A.	G/E		Public Company-linked, FT	1	European-Asian Management	MBA	E		Fees, FT	IMB
Police Service	B.A.	G/E		Public Administration-linked, FT	5	Entrepreneurship	MBA	G/E		Fees, PT	IMB
						General Management	MBA	G/E	Anglia Ruskin University, Cambridge, UK	Fees, PT	IMB
						Health Care Management	MBA	G		Fees, PT	IMB
						Diploma Programme	Degree Awarded	Teaching Language	Dual Award Partners	Funding/Type	Department/Institute
						Consulate Secretary (foreign service)	Dipl.	G		Public Administration-linked, FT	4
						Administration of Justice	Dipl.	G		Public Administration-linked, FT	4

Key facts and figures

K E Y F A C T S A N D F I G U R E S



The Berlin School of Economics and Law is one of Germany's leading universities specialised in business and public administration as well as economics, criminal justice and engineering.

People

- Over 9,000 Students
- 170 Professors
- 495 Part-time lecturers and visiting professors
- 227 Administrative staff

Institutions

- 5 Departments
- 3 Central institutes
- 8 Research institutes
- Member of the Institute for Applied Research Berlin e. V. (IfaF)

Programmes

- 23 Bachelor programmes
- 17 MA programmes
- 5 MBA programme specialisations
- 3 Distance learning programmes
- 2 Diploma programmes

Business and International Contacts

- 480 Company internships annually
- 480 Partners in industry
- 130 International partner universities
- Numerous Partners in the federal government, the federal states (Länder) and the municipalities

Campuses and contacts

C A M P U S E S P A U N S D E S O N T A C T S

The University has three campuses located in the city districts of **Schöneberg, Lichtenberg and Friedrichshain**.

Schöneberg Campus

The Schöneberg Campus houses:

- the University Management
- the main University administration
- the Department of Business and Economics (Department 1)
- the IMB Institute of Management Berlin
- the Business Incubation Centre

Hochschule für Wirtschaft und Recht Berlin
Berlin School of Economics and Law
Schöneberg Campus
Badensche Strasse 52
10825 Berlin
Germany

Friedrichshain Campus

The Friedrichshain Campus houses:

- seminar and lecture rooms

Hochschule für Wirtschaft und Recht Berlin
Berlin School of Economics and Law
Friedrichshain Campus
Neue Bahnhofstrasse 11-17
10245 Berlin
Germany

Lichtenberg Campus

The Lichtenberg Campus houses:

- Department of Cooperative Studies (Department 2)
- Department of Public Administration (Department 3)
- Department of Legal Studies (Department 4)
- Department of Police and Security Management (Department 5)
- Institute for Distance Learning (FSI)
- Institute for Cooperation with Central and Eastern European Countries in Public Reform (IMO)

Hochschule für Wirtschaft und Recht Berlin
Berlin School of Economics and Law
Lichtenberg Campus
Alt-Friedrichsfelde 60
10315 Berlin
Germany

Your contacts at the BSEL:

President

Professor Bernd Reissert
Phone: +49 (0)30 85789-101
E-Mail: praesident@hwr-berlin.de

First Vice President

Professor Thorsten Kurzawa
Phone: +49 (0)30 85789-102
E-Mail: thorsten.kurzawa@hwr-berlin.de

Vice President

Professor Andreas Zaby
Phone: +49 (0)30 85789-103
E-Mail: andreas.zaby@hwr-berlin.de

Vice President

Professor Clemens Arzt
Phone: +49 (0)30 85789-104
E-Mail: clemens.arzt@hwr-berlin.de

Registrar

Norbert Nerlich
Phone: +49 (0)30 85789-201
E-Mail: nerlich@hwr-berlin.de

Student Counselling

Harri Schubert
Phone: +49 (0)30 85789-267
E-Mail: hschuber@hwr-berlin.de

Press Office

Sylvia Katenkamp
Phone: +49 (0)30 85789-301
E-Mail: sylvia.katenkamp@hwr-berlin.de

Hochschule für Wirtschaft und Recht (HWR) Berlin
Berlin School of Economics and Law
Badensche Strasse 52
10825 Berlin
Germany
www.hwr-berlin.de

Published by

The President's Office of the Berlin School of Economics and Law

Edited by

Professor Gert Bruche
Sylvia Katenkamp
Susanne Möhring

Translation

Andrew Boreham

Layout

Ines Ruhstrat
Marc Wingenfeld

Photos

Dagmar Schwelle

Printed by

Druckerei Hermann Schlesener KG, Berlin

Number of copies published

1000

© 2010 Hochschule für Wirtschaft und Recht Berlin
Berlin School of Economics and Law
All rights reserved.

